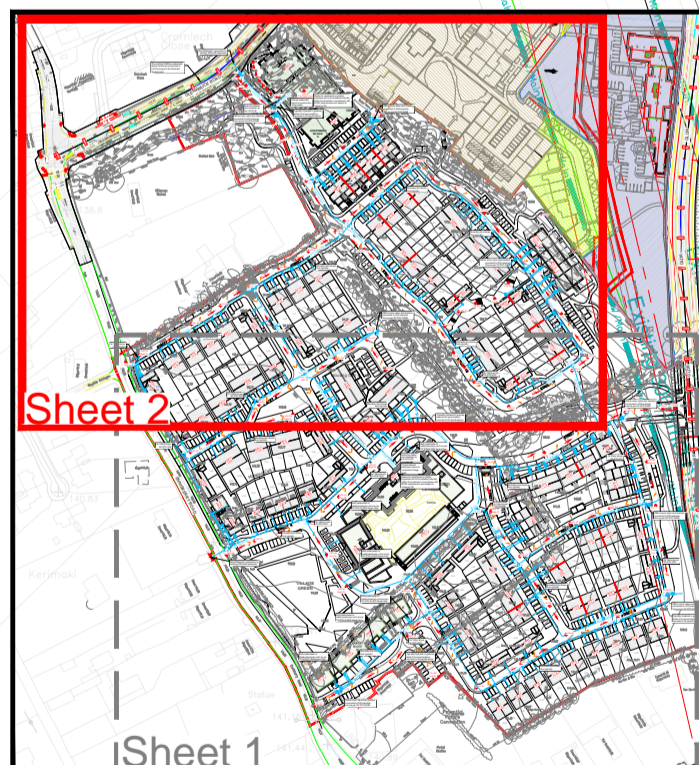
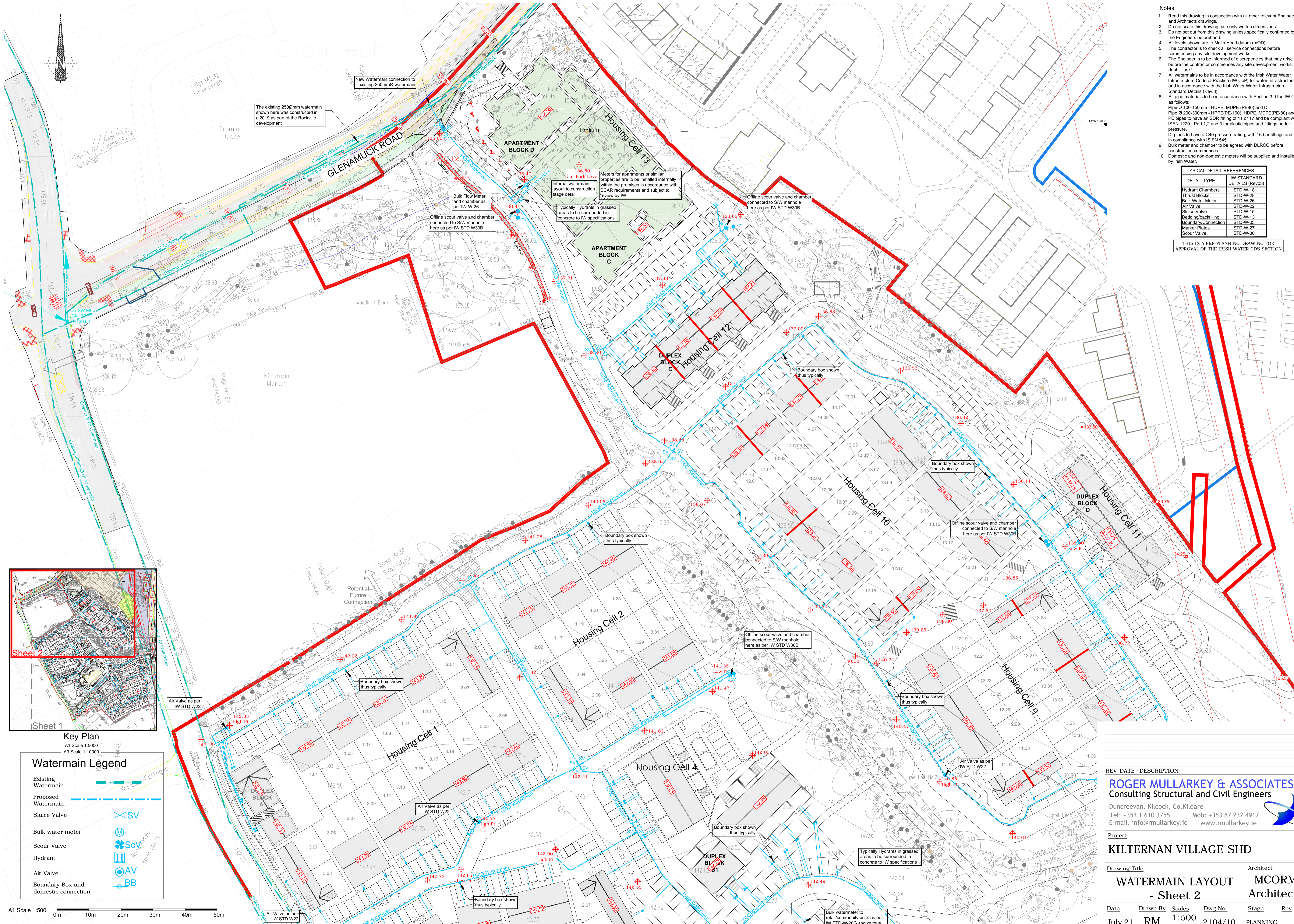


- Notes:
1. Read this drawing in conjunction with all other relevant Engineers and Architects drawings.
  2. Do not scale this drawing, use only written dimensions.
  3. Do not set out from this drawing unless specifically confirmed by the Engineers beforehand.
  4. All levels shown are to Malin Head datum (mOD).
  5. The contractor is to check all service connections before commencing any site development works.
  6. The Engineer is to be informed of discrepancies that may arise before the contractor commences any site development works, if in doubt - ask.
  7. All watermain to be in accordance with the Irish Water Water Infrastructure Code of Practice (IW CoP) for water Infrastructure and in accordance with the Irish Water Water Infrastructure Standard Details (Rev. 3).
  8. All pipe materials to be in accordance with Section 3.9 the IW CoP as follows:  
 Pipe Ø 100-150mm - HDPE, MDPE (PE80) and DI  
 Pipe Ø 200-300mm - HDPE (PE-100), HDPE, MDPE (PE-80) and DI  
 PE pipes to have an SDR rating of 11 or 17 and be compliant with ISEN 1220 Part 1, 2 and 3 for plastic pipes and fittings under pressure.  
 DI pipes to have a C40 pressure rating, with 16 bar fittings and be in compliance with IS EN 545.
  9. Bulk meter and chamber to be agreed with DLRC before construction commences.
  10. Domestic and non-domestic meters will be supplied and installed by Irish Water.

TYPICAL DETAIL REFERENCES	
DETAIL TYPE	IW STANDARD DETAILS (Rev03)
Hydrant Chambers	STD-W-18
Thrust Blocks	STD-W-28
Bulk Water Meter	STD-W-26
Air Valve	STD-W-22
Sluice Valve	STD-W-15
Bedding/backfilling	STD-W-13
Boundary/Connection	STD-W-03
Marker Plates	STD-W-27
Scour Valve	STD-W-30

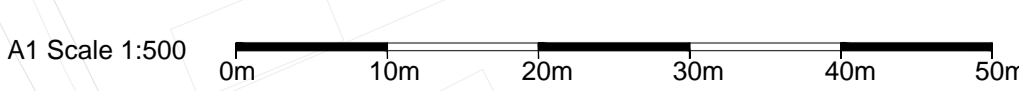
THIS IS A PRE-PLANNING DRAWING FOR APPROVAL OF THE IRISH WATER CDS SECTION



**Key Plan**  
 A1 Scale 1:5000  
 A3 Scale 1:10000

**Watermain Legend**

- Existing Watermain: Solid blue line
- Proposed Watermain: Dashed blue line
- Sluice Valve: SV symbol
- Bulk water meter: M symbol
- Scour Valve: ScV symbol
- Hydrant: H symbol
- Air Valve: AV symbol
- Boundary Box and domestic connection: BB symbol



REV/DATE DESCRIPTION

**ROGER MULLARKEY & ASSOCIATES**  
 Consulting Structural and Civil Engineers

Duncreevan, Kilcock, Co.Kildare  
 Tel: +353 1 610 3755 Mob: +353 87 232 4917  
 E-mail: info@rmullarkey.ie www.rmullarkey.ie

Project  
**KILTERNAN VILLAGE SHD**

Drawing Title  
**WATERMAIN LAYOUT - Sheet 2**

Architect  
**MCORM Architects**

Date	Drawn By	Scales	Dwg.No.	Stage	Rev
July '21	RM	1:500 @A1	2104/10	PLANNING	

©This drawing is Copyright and must only be used for the project noted